



MPS-3000

Vibrocoring System

The SEAS MPS-3000 Vibrocoring System is a leap forward in deep-water soft-sediment sampling technology.

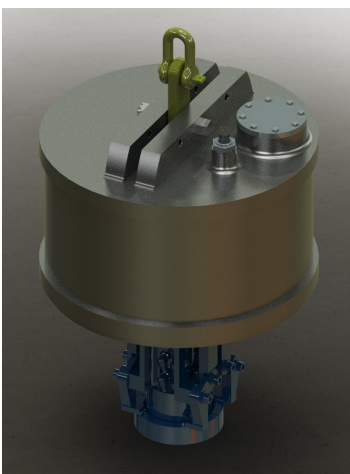
The MPS-3000 is a multi-core platform which allows clients to acquire up to ten 4m core samples per deployment from water depths to 2000m, saving significant vessel time and cost.

Four horizontal vectored thrusts and two vertical thrusters assist in keeping the system vertical on sites with uneven seabed and for final site positioning

The system is deployed on a work-class ROV umbilical and utilizes single mode optical-fibre telemetry to control the various onboard systems, sensors and cameras



MPS-3000 4m configuration



T-2000 drive unit

Specifications

Depth Rating:	2000 msw (6560' sw)
Height:	6500 mm (255.9 in.)
Length	1780 mm (70 in.)
Width	2000 mm (78 in.)
Mass in Air:	1600 kg (3530 lb)
Frame construction:	Aluminium alloy
System Power:	3000Vac / 1000Vac / 440 Vac 3ø 50/60 Hz
Hydraulic Power Pack	56kW (75 HP) / 3000 Vac 3ø 50/60 Hz
Subsea Telemetry / Control	Tritech iPP telemetry pod with Fibre Optic Multiplexer Tritech 10 function NG3 iVP valve pack and 5 function NG6 iVP valve pack with torque control
Surface Control System	Fathom Systems PC based control system
Thrusters:	6 Total, 4 vectored horizontal and 2 vertical
Auxiliary Systems:	Tritech Super Sea Prince Digital Sonar Technology (DST) High Definition Imaging Sonar Tritech Intelligent Gyro Compass (iGC) Tritech PA500 Altimeter 4 x DSPL B/W Multi-SeaCam Cameras with built-in LED illumination, 1 x Trittech Typhoon Colour Zoom with 2 x external 250W filament lights 2 x Trittech hydraulic pan & tilt units. Port available for client USBL responder. Survey Sensor Ports for client survey tools such as Side-scan Sonar or Sub-bottom Profiler
Winch / Umbilical:	TBA
A-Frame / LARS:	8 m / 12 tonne SWL Ships A-frame if available or Custom 8 m / 12 tonne SWL LARS

